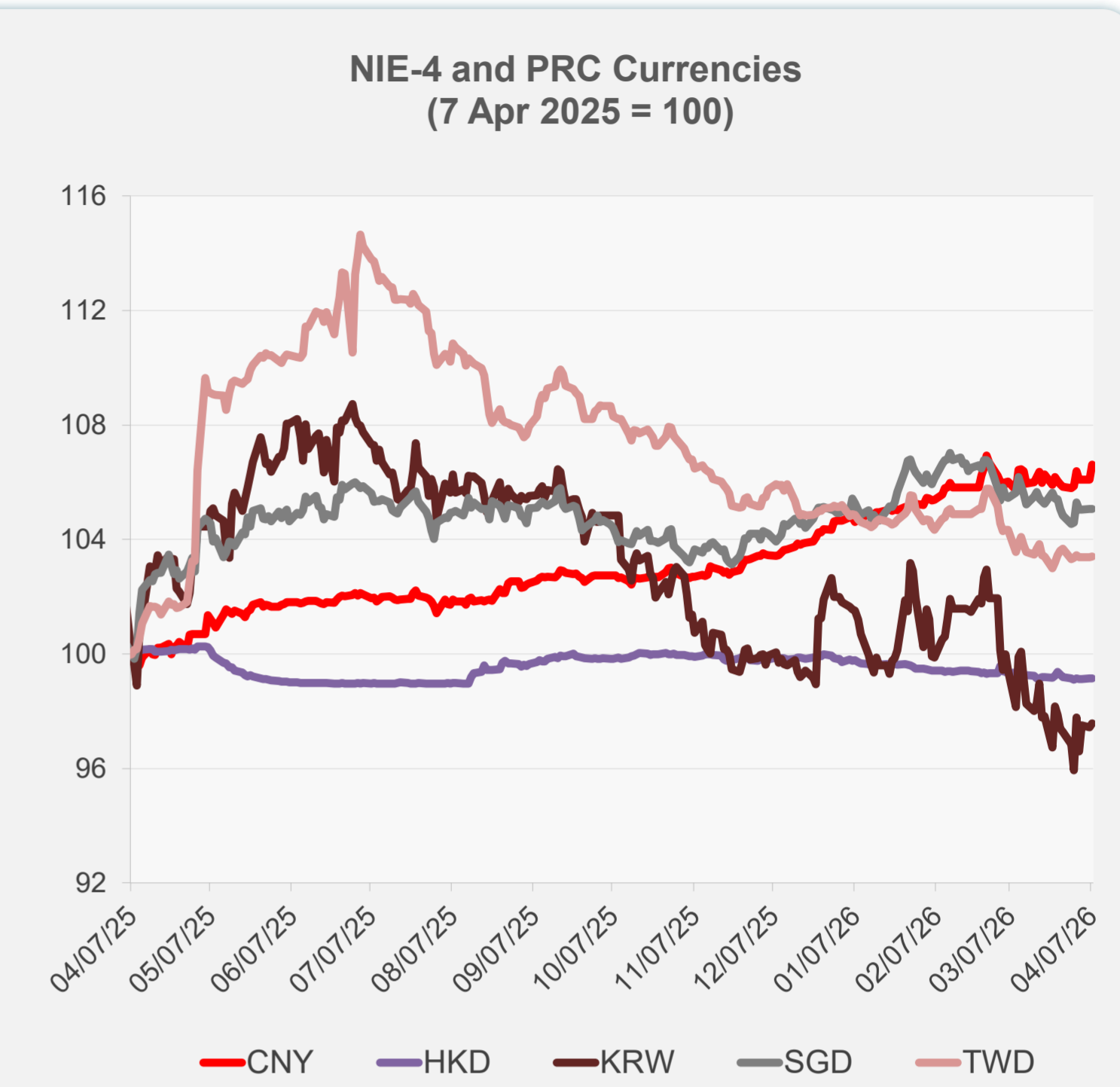
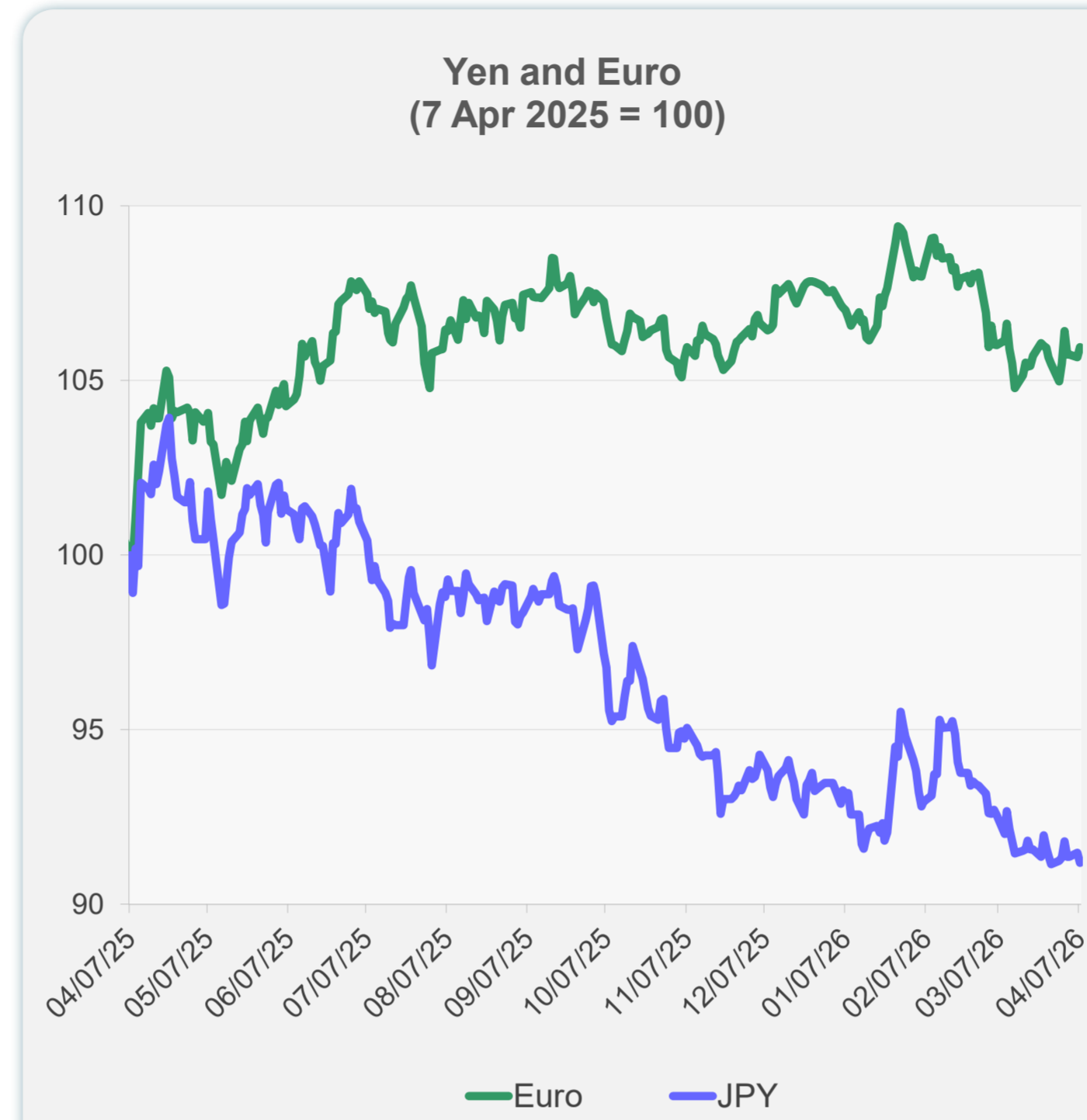
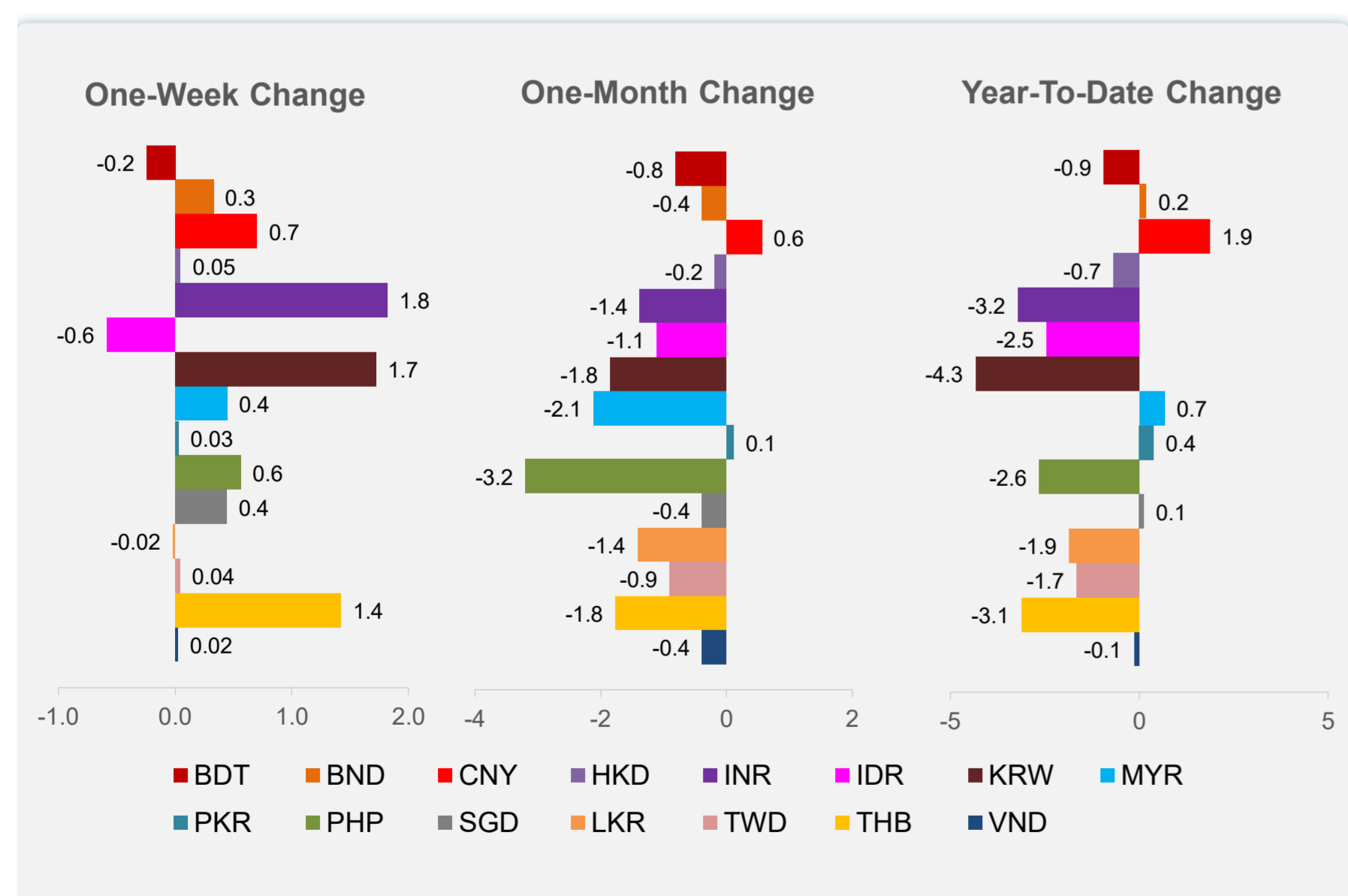
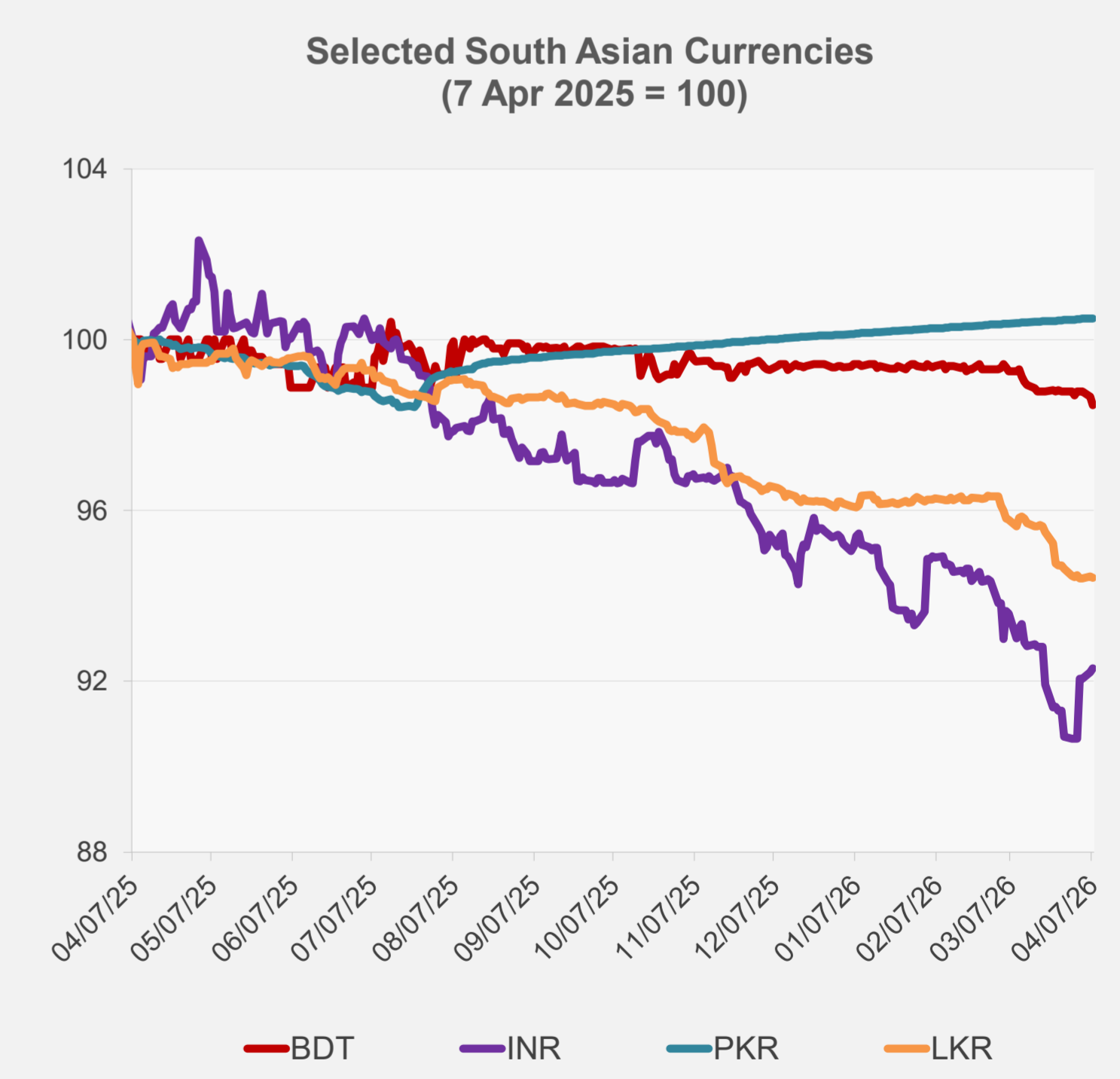
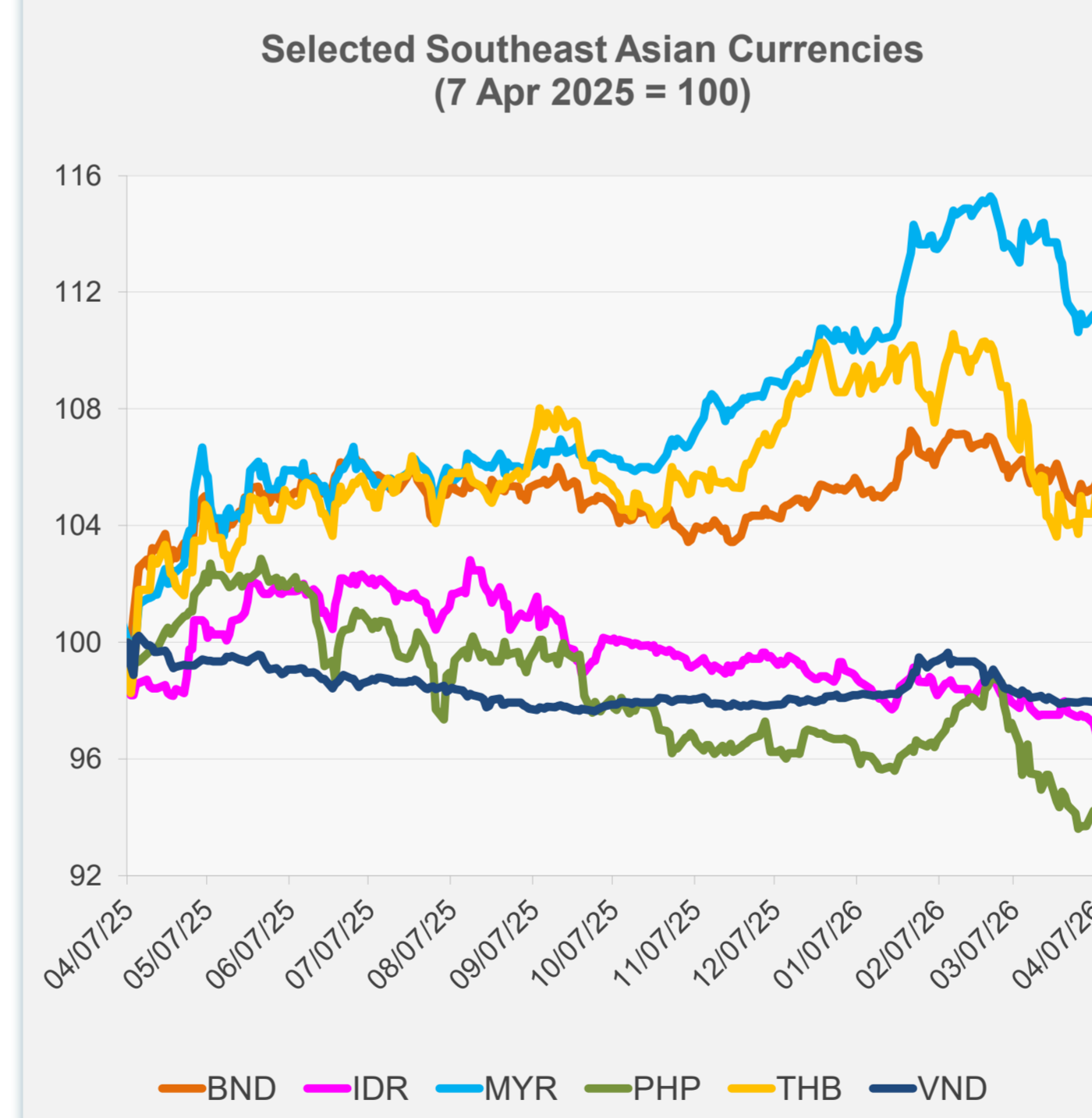


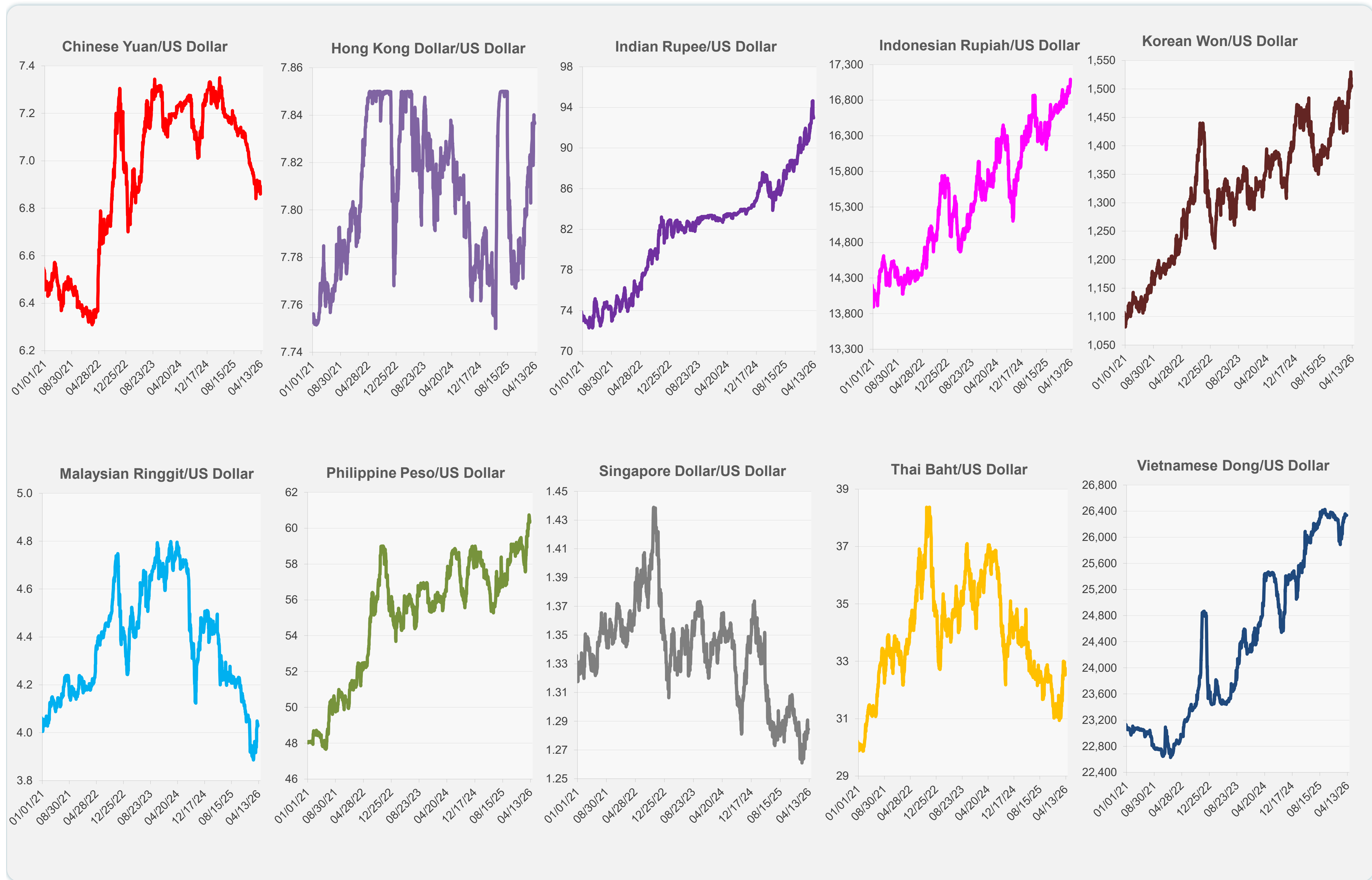
	Latest Closing	% change from Previous Day	% change from 01-Jan-26
Euro	0.86	0.26	-1.46
Japanese yen (JPY)	159.87	-0.31	-2.43
Bangladeshi taka (BDT)	123.40	-0.20	-0.93
Brunei dollar (BND)	1.28	0.16	0.19
Chinese yuan (CNY)	6.86	0.49	1.87
Hong Kong dollar (HKD)	7.84	0.01	-0.68
Indian rupee (INR)	92.96	0.10	-3.21
Indonesian rupiah (IDR)	17,094.50	-0.35	-2.45
Korean won (KRW)	1,504.20	0.14	-4.33
Malaysian ringgit (MYR)	4.03	-0.09	0.67
Pakistan rupee (PKR)	279.05	0.00	0.38
Philippine peso (PHP)	60.40	-0.12	-2.64
Singapore dollar (SGD)	1.28	-0.01	0.12
Sri Lanka rupee (LKR)	315.45	-0.03	-1.85
Taipei,China NT dollar (TWD)	31.97	0.02	-1.65
Thai baht (THB)	32.52	0.75	-3.11
Vietnamese dong (VND)	26,336.50	0.00	-0.14



NIE = Newly Industrialized Economies



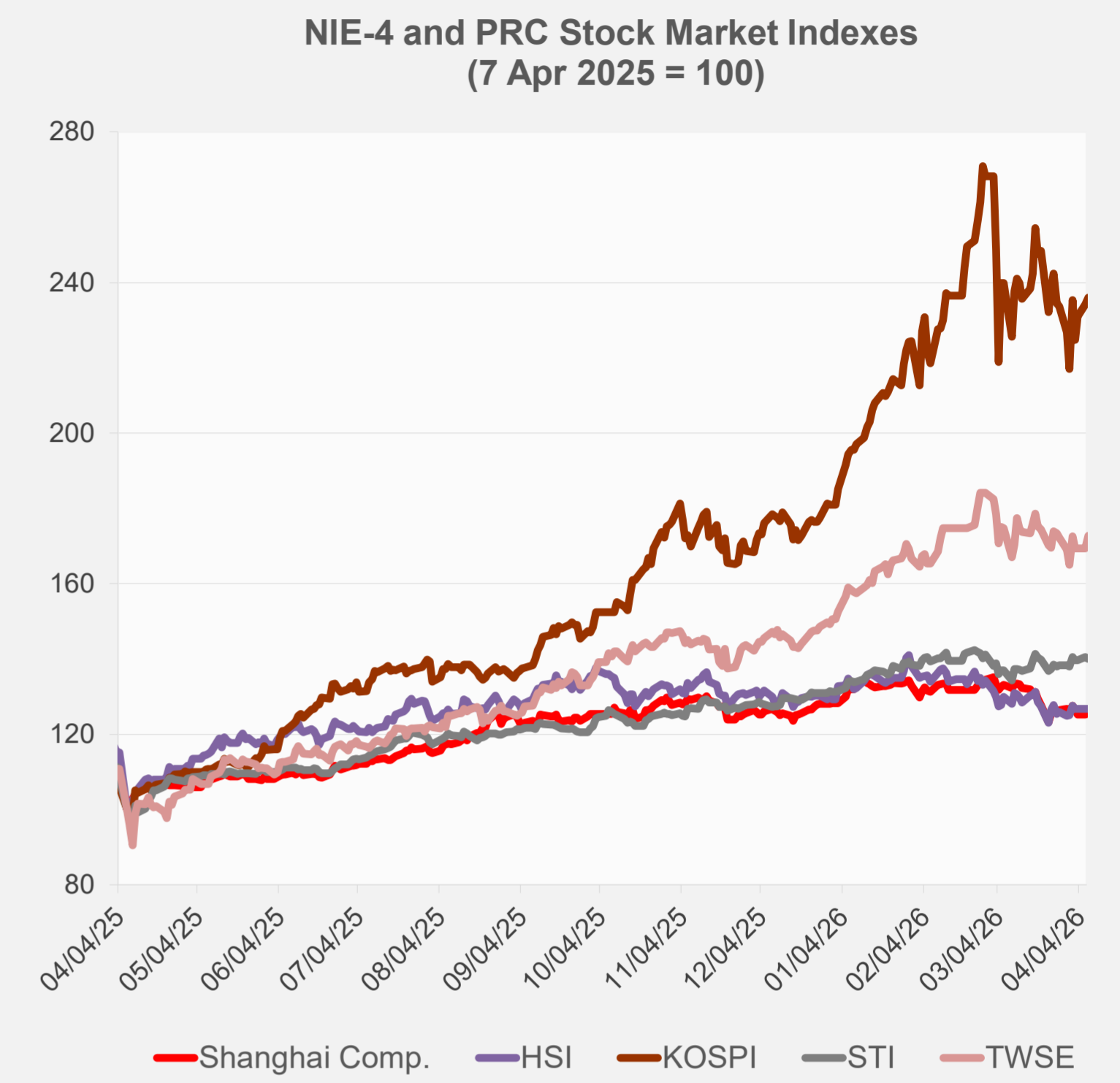
Note: Negative/Decreasing values indicate depreciation of local currency, and positive/increasing values indicate appreciation.
Source: ADB calculations using data from Bloomberg and Haver Analytics.



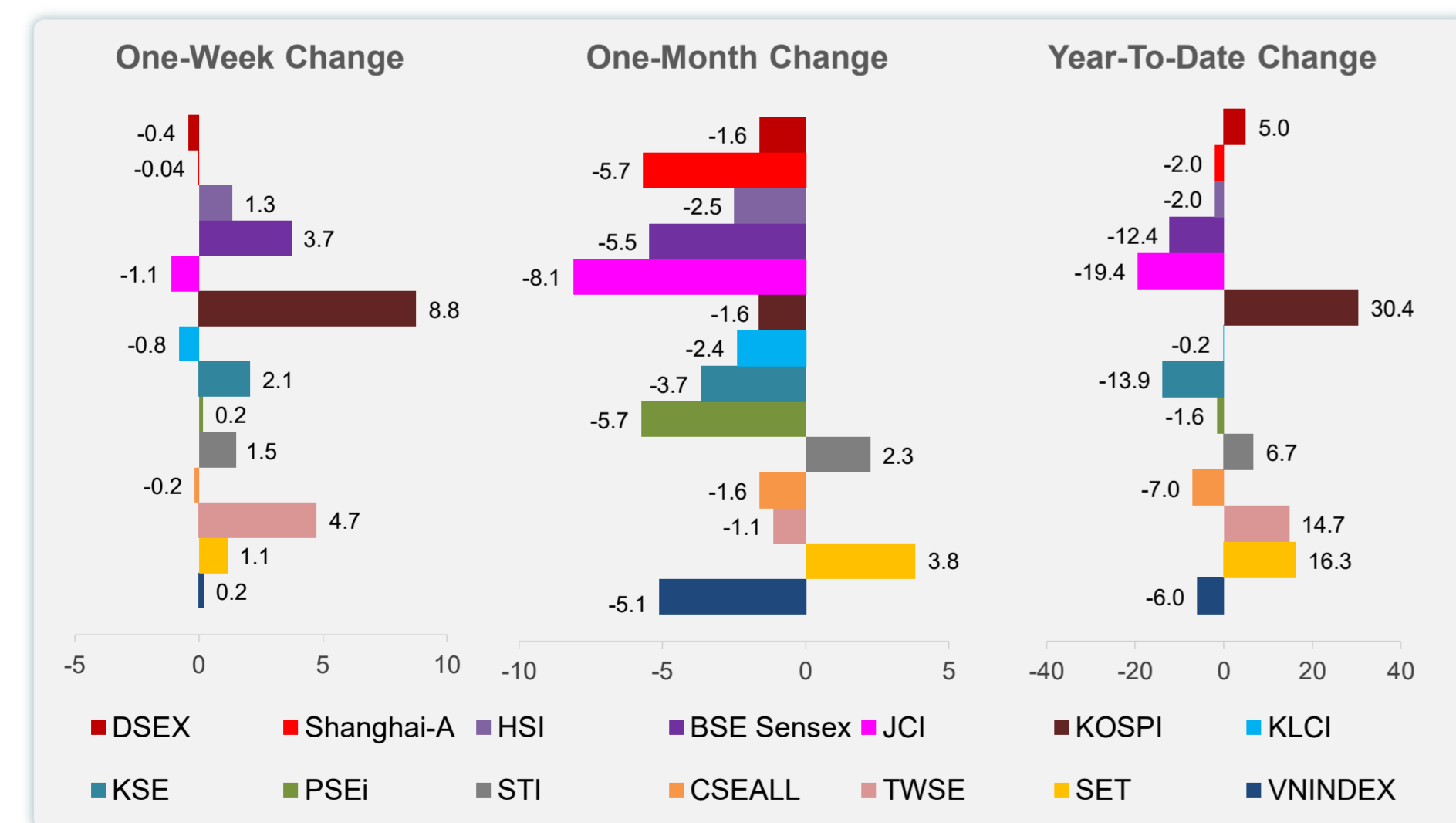
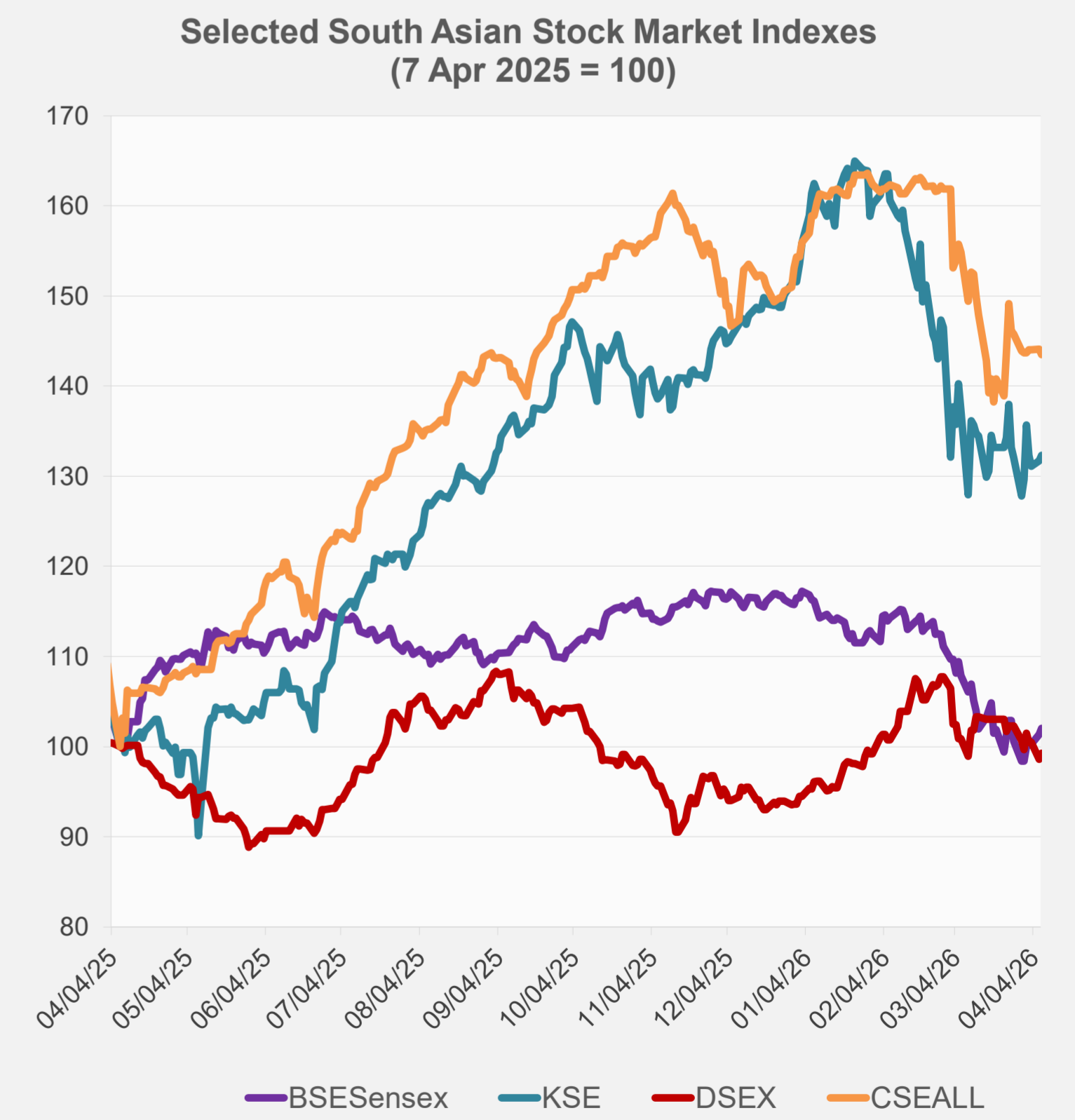
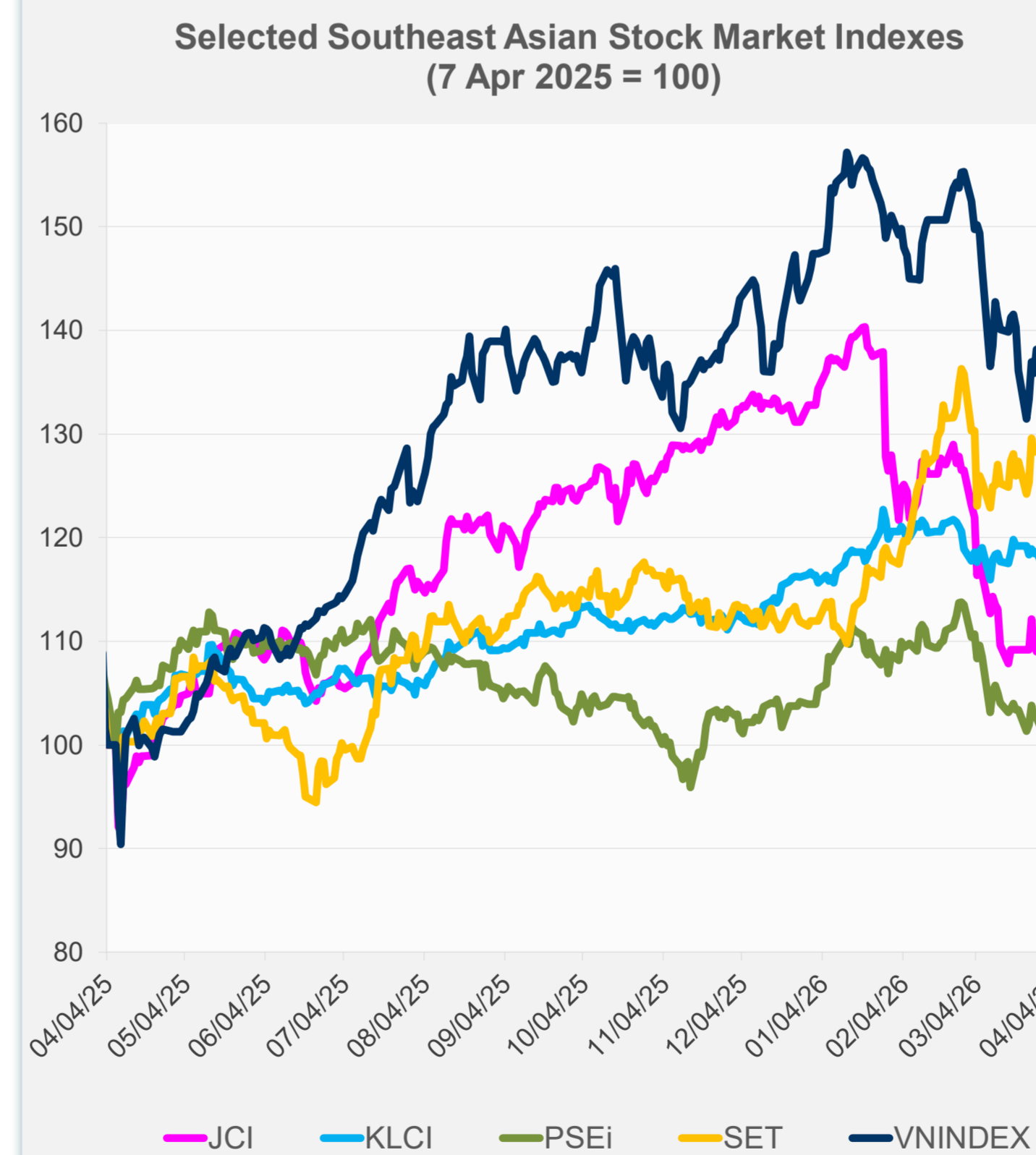
Source: Haver Analytics.

Daily Market Watch
STOCK INDEXES

	Latest Closing	% change from Previous Day	% change from 01-Jan-26
US Dow Jones Ind Avg	46,584.46	-0.18	-3.08
US NASDAQ	22,017.85	0.10	-5.27
US S&P 500	6,616.85	0.08	-3.34
UK FTSE 100	12,921.56	-1.45	14.74
EURO STOXX 50	5,633.22	-1.05	-2.73
Japan NIKKEI 225	53,429.56	0.03	6.14
Bangladesh DSEX	5,156.87	0.67	5.01
PRC Shanghai Comp.	3,890.16	0.26	-1.98
Hong Kong, China HSI	25,116.53	0.00	-2.01
India BSE Sensex	74,616.58	0.69	-12.41
Indonesia JCI	6,971.03	-0.26	-19.38
Korea, Rep. of KOSPI	5,494.78	0.82	30.39
Malaysia KLCI	1,676.86	-0.24	-0.19
Pakistan KSE 100	152,013.00	0.45	-13.86
Philippines PSEi	5,957.87	0.16	-1.57
Singapore STI	4,958.01	-0.29	6.71
Sri Lanka CSEALL	21,032.46	-0.45	-7.04
Taipei, China TWSE	33,229.82	2.02	14.73
Thailand SET	1,464.43	0.72	16.26
Viet Nam VNINDEX	1,677.54	0.15	-5.99



NIE = Newly Industrialized Economies



Sources: ADB calculations using data from Bloomberg and CEIC Data Company.



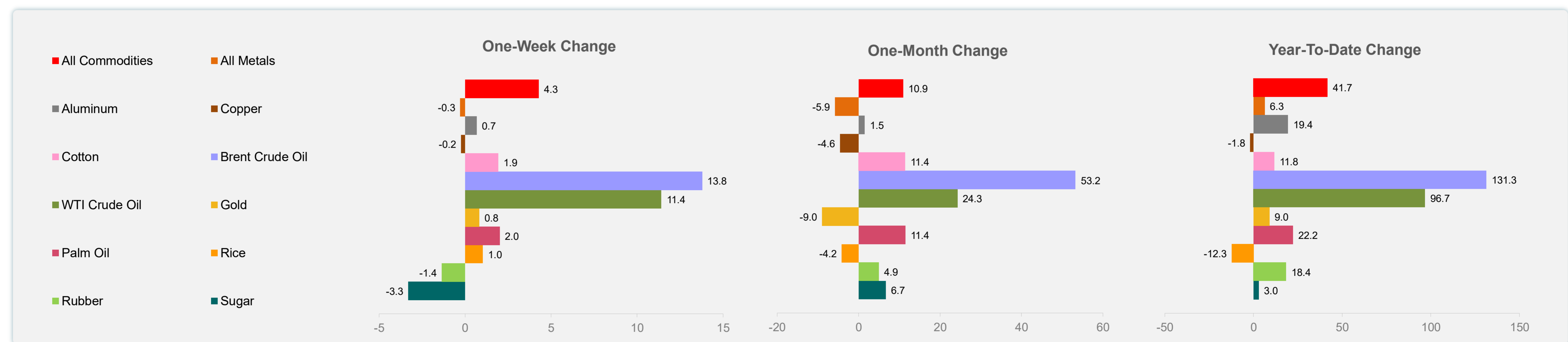
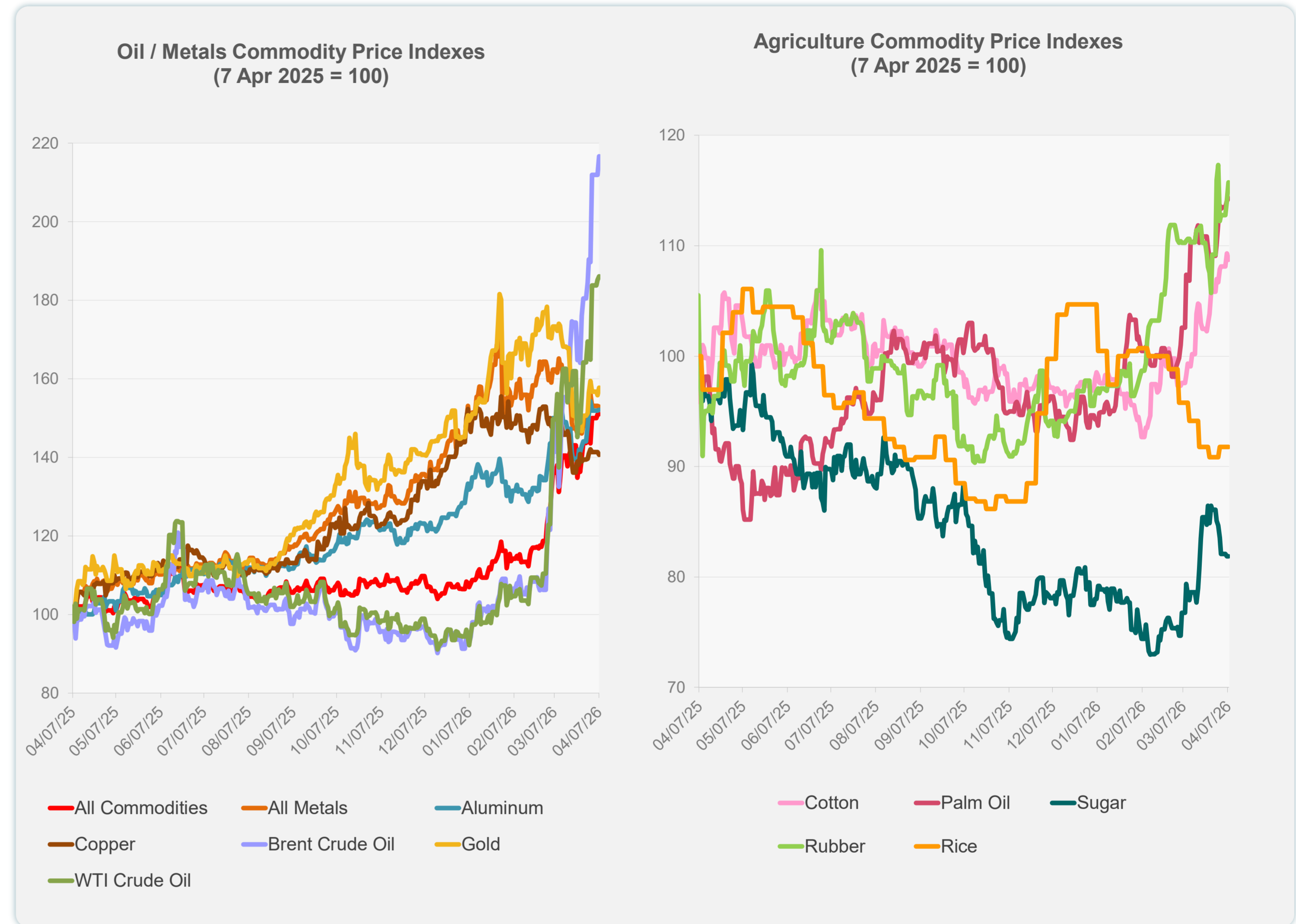
Sources: ADB calculations using data from Bloomberg and CEIC Data Company.

Daily Market Watch
COMMODITY PRICES

8 April 2026, 9:00 AM Manila

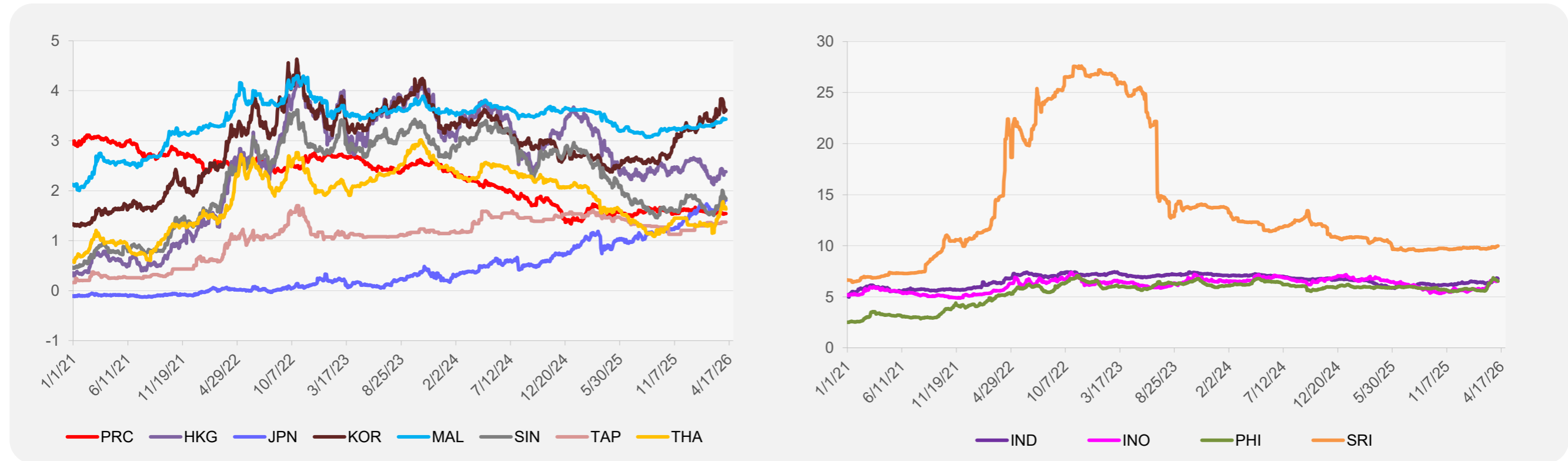
	Unit	Latest Closing	% change from Previous Day	% change from 01-Jan-26
S&P All Commodities	US\$	777.09	0.07	41.67
S&P All Metals	US\$	471.76	-0.17	6.31
Aluminum	US\$/metric ton	3,544.82	0.15	19.43
Copper	US\$/metric ton	12,228.36	-0.48	-1.81
Cotton	US cents/lb	69.31	-0.52	11.75
Brent Crude Oil	US\$/barrel	144.46	2.27	131.34
WTI Crude Oil	US\$/barrel	112.95	0.48	96.71
Gold	US\$/troy oz	4,706.51	1.22	8.96
Palm Oil	US\$/metric tonne	1,183.96	0.22	22.23
Rice ¹	US\$/metric ton	391.00	0.00	-12.33
Rubber ²	US\$/kg	254.50	1.39	18.37
Sugar	US cents/lb	15.23	0.00	2.97

¹ Latest closing price from 1 April 2026.
² Singapore Exchange, Ribbed Smoked Sheet Rubber.

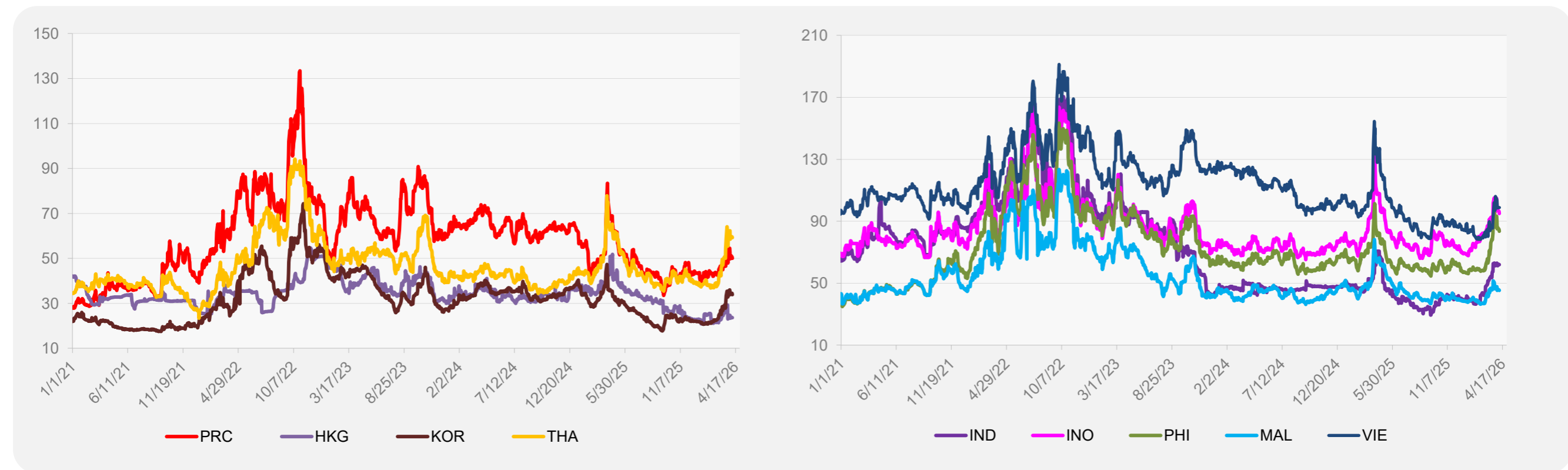


Source: ADB calculations using data from Bloomberg.

5-YEAR LOCAL CURRENCY GOVERNMENT BOND YIELDS (%)



5-YEAR CREDIT DEFAULT SWAP¹



¹ In USD and based on sovereign bonds.
Source: ADB calculations using data from Bloomberg.